

Placement Report – 2019

Batch: 2017-19

(The entire data updated till 31st Jan. 2019)

	CTC in Lac
Highest CTC	
International	57.40
Domestic	27
Average CTC	12.50

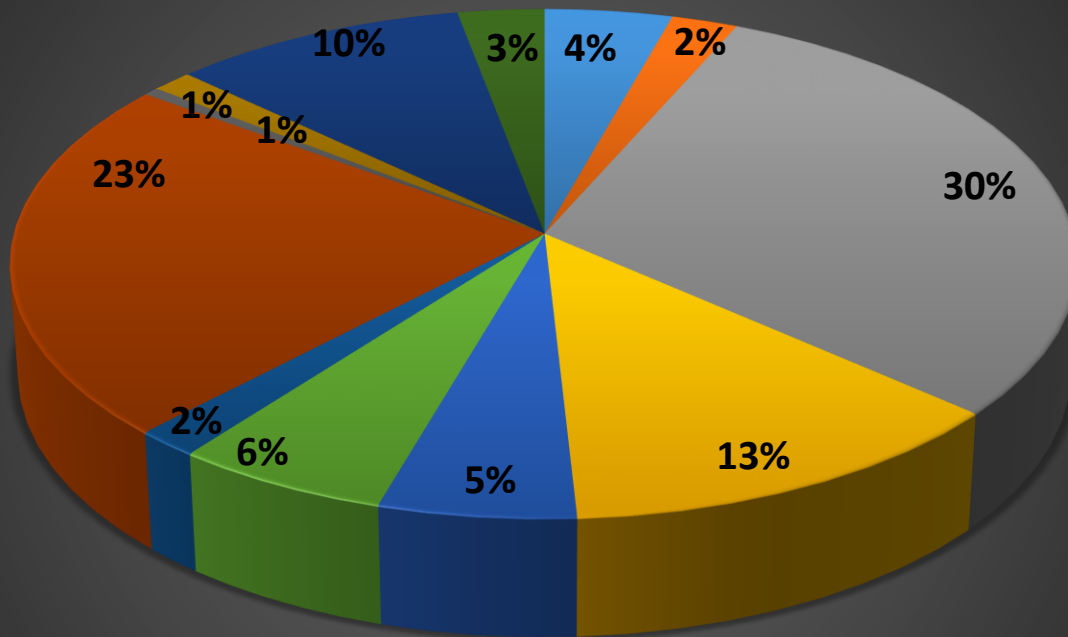
Number of participating companies: 179

Number of first time recruiters: 61

Total number of pre-placement offers: 87

International offers: 12

**Placements - Industry Wise No. of Offers %age
(2017-19 Batch)**



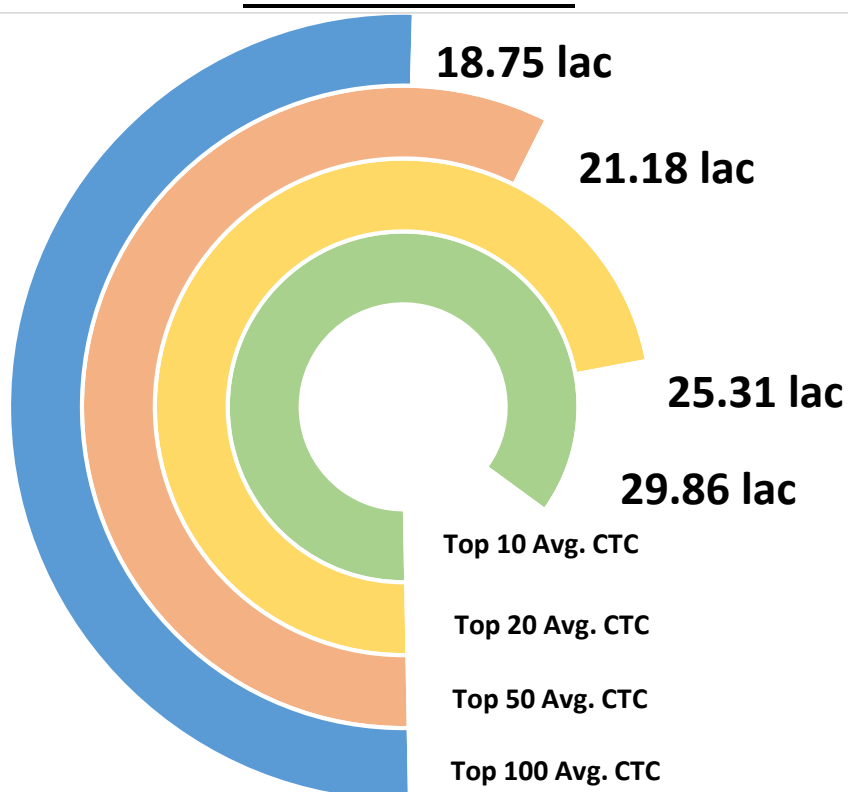
- Analytics / Market Research
- Consulting
- Hospitality / Services
- Media

- Automobile
- E-commerce / Retail
- IT/ITES & Telecom
- Mfg. & engineering

- BFSI
- FMCG / FMCD
- Logistics
- Pharma / Healthcare

Placement Report – 2019

Batch: 2017-19



**Indicative not exhaustive

Some of our students have joined these companies

Reckitt Benckiser	Pepsi Co.	L'Oreal India Pvt. Ltd.
Abbott Healthcare	Goldman Sachs	Google
Britannia Industries Ltd.	ABRFL	Accenture
Tata Global Beverages Ltd	Citi Bank	D.E. Shaw
Deloitte	EY	FLY DUBAI
GEP Solutions	KPMG	Mahindra & Mahindra
Maruti Suzuki	Mother Dairy	Pernod Ricard
Piramal Enterprises	Pricewaterhousecoopers	Square Yards
Whirlpool of India	Arcesium	Bajaj Auto
Max Life Insurance Co. Ltd.	Michael Page International	Cognizant Technology Solutions
Dell	Landmark Group	Credit Suisse
Capgemini	Cisco	HCL Technologies Ltd
Hewlett Packard	HSBC	Infosys
Royal Bank Of Scotland	SMC Pneumatics	Tata Capital
Tata Motors	Times OOH	VIP Industries
Wipro		